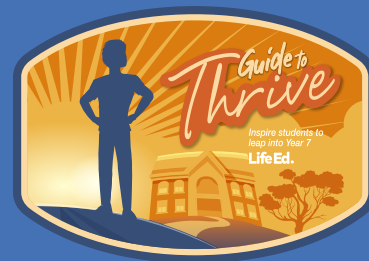


Parents & Carers Checklist

Helping you help your child to thrive



Year 6

Term 1

After confirming which secondary school your child will attend, submit the enrolment forms. (be aware of any early enrolment requirements) ☐

Organise to meet the teacher. This is a great time to understand what your school will cover to help your child prepare for secondary school. ☐

Visit Life Ed's Guide to Thrive: **Introduction to transition** ☐

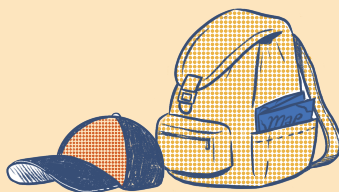
Sign up to your schools' email notifications to stay up-to-date

Year 6

Term 2

Visit Life Ed's Guide to Thrive: **Communication & social skills** ☐

Complete the associated tasks and activities to support what your child is doing in the classroom ☐



Tick off the checklist as you move through the year



Year 6

Term 3

Visit Life Ed's Guide to Thrive: **Managing schoolwork expectations** ☐

Visit Life Ed's Guide to Thrive: **Change & uncertainty** ☐

Complete the associated tasks and activities to support what your child is doing in the classroom ☐

Year 6

Term 4

Visit Life Ed's Guide to Thrive: **New school environment** ☐

Complete the associated tasks and activities to support what your child is doing in the classroom ☐

Complete the travelling to school activity with your child ☐

Term 1

Year 7 + Ongoing

Check-in and continue conversations with your child about transitioning to secondary school ☐

Re-visit Life Ed's Guide to Thrive: **Introduction to transition** ☐

Sign up to your secondary schools' email notifications to stay up-to-date ☐



Access FREE resources:
Visit guidetothrive.lifeed.org.au